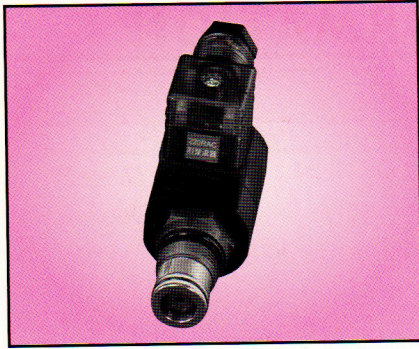
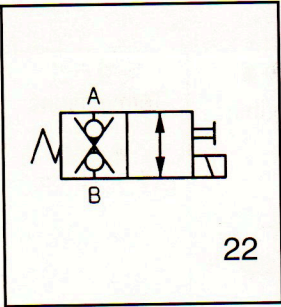


ORDERING INFORMATION



V3570	***	**	10
電動止回閥 Cartridge solenoid double check VALVE	線圈型式 Coil type D12:DC12v D24:DC24v RA 110V RA 220V (50 / 60 Hz)	OPTION 標準 None:Standard(22) 付手動 OM:With manual	設計號碼 Design number

Graphic Symbol



DIMENSIONS

V3566							接線方式 Terminations
常閉 Normally closed-NC	最大流量 Max. flow	額定流量 Rated flow	最大壓力 Max. pressure	溫度範圍 Operating temperature range	重量 kg(lbs)	插頭式 DG:DIN 43650	
常開 Normally open-NO	Litres/min		kgf/cm ² (psi)				
NC	20	—	35 l/min (5.3 G.P.M)	25 l/min (6.6 G.P.M)	250(3500)	-20°C ~ 120°C	0.51(1.1) including coil
	22	—					

DIMENSIONS

MILLMETERS (INCHES)

