

Pilot Operated Check Modular Valves

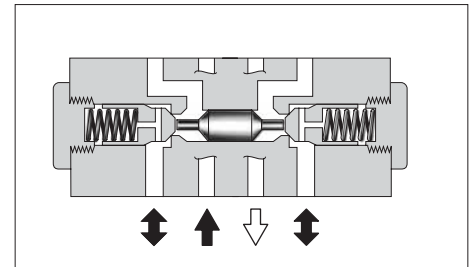
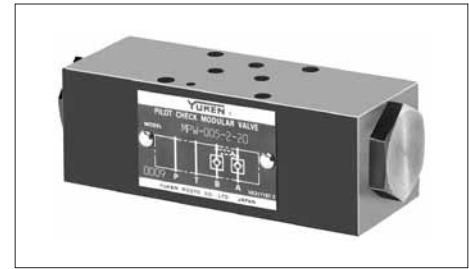
Specifications

| Model Numbers | Max. Operating Pressure MPa (PSI) | Max. Flow L/min (U.S.GPM) |
|--|--------------------------------------|------------------------------|
| MPA-005-2-20 MPB-005-2-20 MPW-005-2-20 | 25 (3630) | 15 (3.96) |

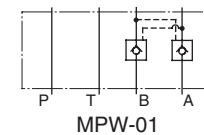
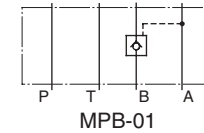
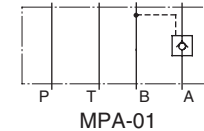
Model Number Designation

| F- | MPW | -005 | -2 | -20 | * |
|--|--|------------|--------------------------------|---------------|-----------------|
| Special Seals | Series Number | Valve Size | Cracking Pressure MPa (PSI) | Design Number | Design Standard |
| F: Special Seals for Phosphate Ester Type Fluids (Omit if not required) | MPA: Pilot Operated Check Valve for A-Line MPB: Pilot Operated Check Valve for B-Line MPW: Pilot Operated Check Valve for A&B-Lines | 005 | 2: 0.2 (29) | 20 | Refer to ★ |

★ Design Standards: None Japanese Standard "JIS", European Design Standard and N. American Design Standard

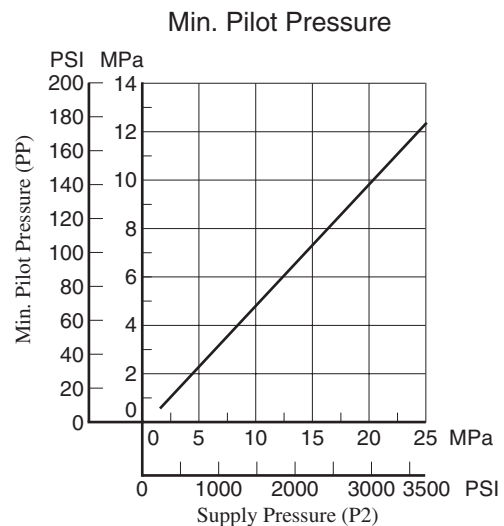
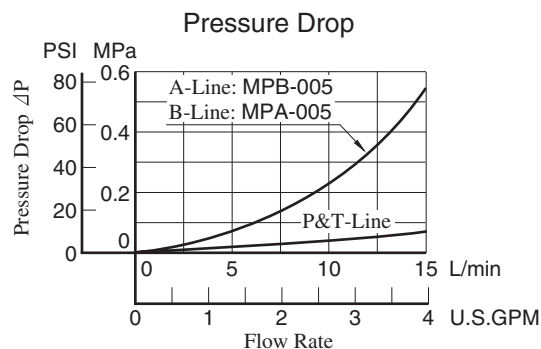
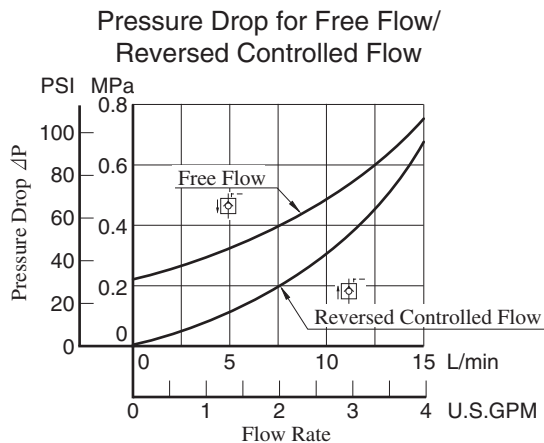


Graphic Symbols



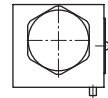
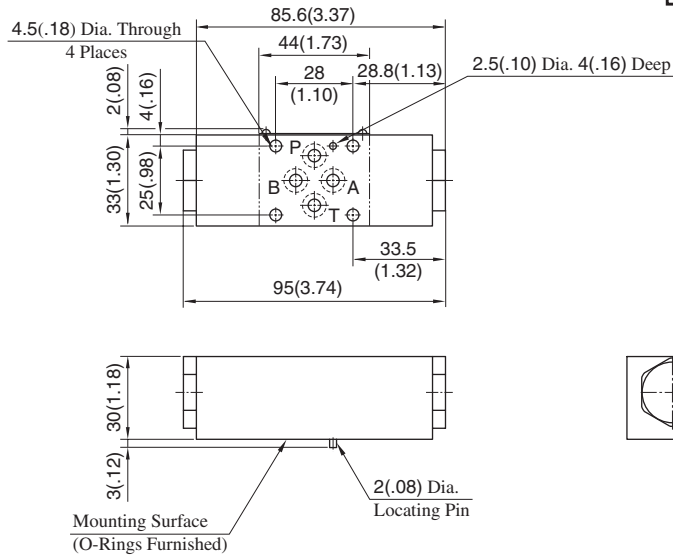
Typical Performance Characteristics

Hydraulic Fluid: Viscosity 35 mm²/s (164 SSU), Specific Gravity 0.850



MPA-005-2-20
 MPB-005-2-20
 MPW-005-2-20

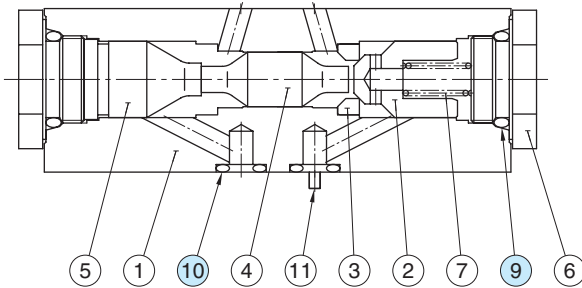
**DIMENSIONS IN
 MILLIMETRES (INCHES)**



Approx. Mass.....0.55 kg(1.2 lbs.)

Spare Parts List

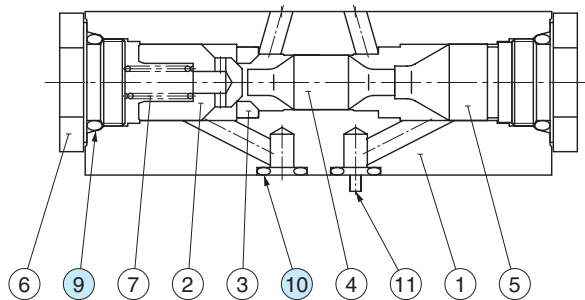
MPA-005-2-20



List of Seals

| Item | Name of Parts | Part Numbers | Qty. | Remarks |
|------|---------------|--------------|------|-------------------------|
| 9 | O-Ring | SO-NB-P14 | 2 | Included in Seal Kit |
| 10 | O-Ring | SO-NB-P6 | 4 | Kit No. : KS-MPA-005-20 |

MPB-005-2-20



MPW-005-2-20

