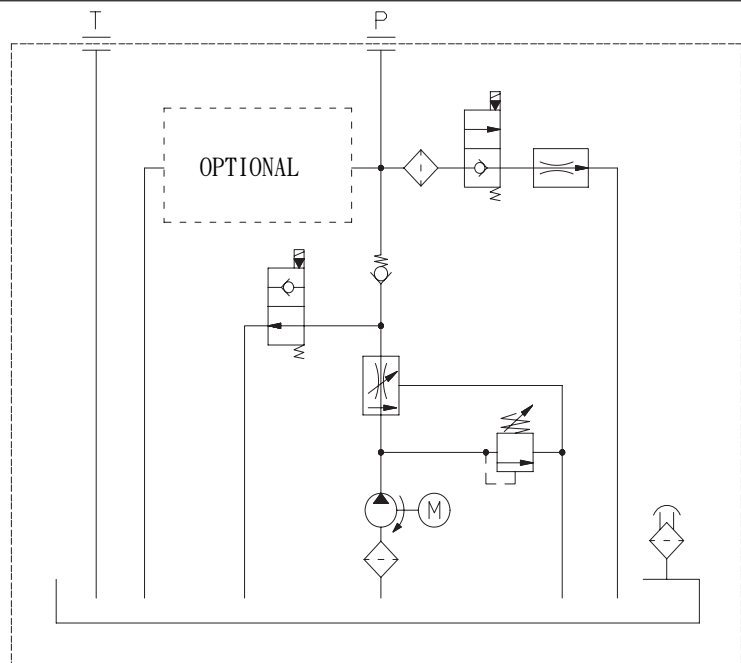


OPTIONAL	
TYPE	SCHEMATIC
P	
P1	
S	



*Please refer to the "HOW TO ORDER" pages of W87D series.

The W87D power pack series is designed for a wide range of applications which include;

- ◆ DC motors range from 0.55KW to 3.0KW; as well as DC 12 and 24 volts.
- ◆ Tank sizes vary from 0.5L to 1.7L.
- ◆ Pump capacity range is from 0.5cc/rev to 7.3cc/rev.
- ◆ Options: Handle pump; Hi-Low speed lowering solenoid valves;
Adjustable output flow; By-Pass solenoid valve.

The purpose for the mini design is to save space. The power pack is only 152mm by 152mm. If you have any questions or need a custom design, please feel free to contact us.